

# **RWE Renewables UK Dogger Bank South (West) Limited**

# **RWE Renewables UK Dogger Bank South (East) Limited**

# **Dogger Bank South Offshore Wind Farms**

**Works Plans (Offshore) (Revision 4)**

**Volume 2**

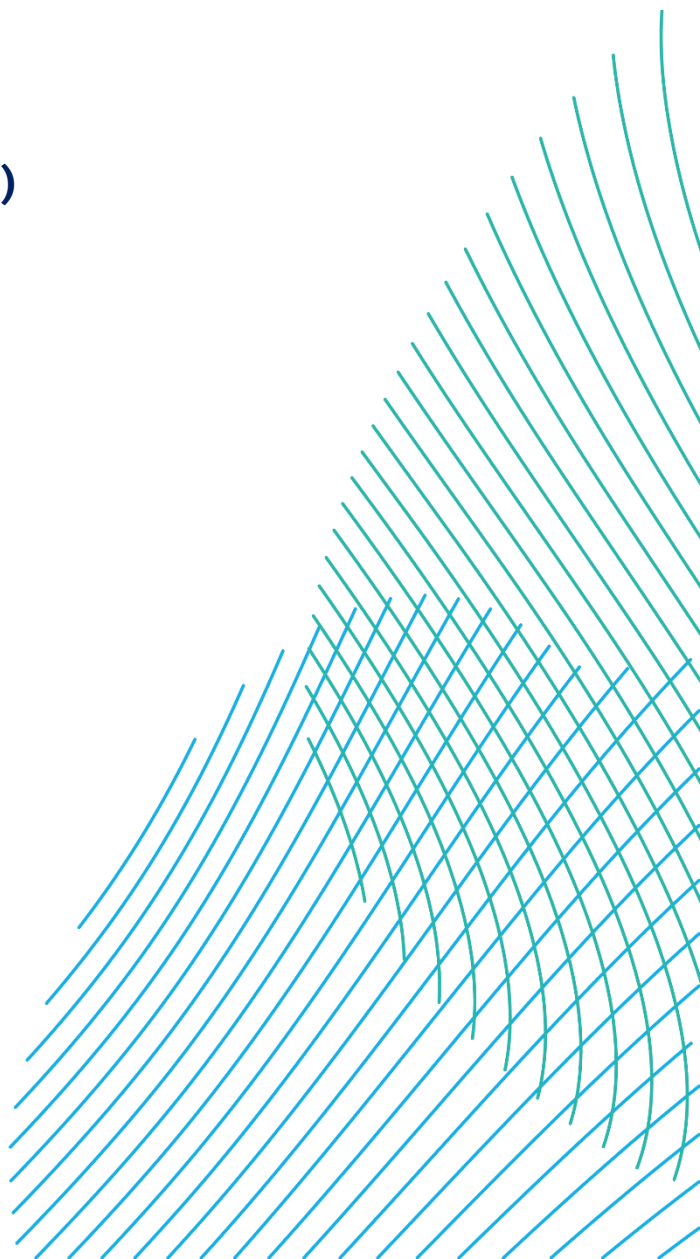
**Submission for Deadline 2**

**February 2025**

**Application Reference: 2.5**

**APFP Regulation: 5(2)(j)**

**Revision: 04**



Company:	<b>RWE Renewables UK Dogger Bank South (West) Limited and RWE Renewables UK Dogger Bank South (East) Limited</b>	Asset:	<b>Development</b>
Project:	<b>Dogger Bank South Offshore Wind Farms</b>	Sub Project/Package:	<b>Consents</b>
Document Title or Description:	Works Plans (Offshore) (Revision 4)		
Document Number:	004525724-04	Contractor Reference Number:	N/A

*COPYRIGHT © RWE Renewables UK Dogger Bank South (West) Limited and RWE Renewables UK Dogger Bank South (East) Limited, 2024. All rights reserved.*

*This document is supplied on and subject to the terms and conditions of the Contractual Agreement relating to this work, under which this document has been supplied, in particular:*

**LIABILITY**

*In preparation of this document RWE Renewables UK Dogger Bank South (West) Limited and RWE Renewables UK Dogger Bank South (East) Limited has made reasonable efforts to ensure that the content is accurate, up to date and complete for the purpose for which it was contracted. RWE Renewables UK Dogger Bank South (West) Limited and RWE Renewables UK Dogger Bank South (East) Limited makes no warranty as to the accuracy or completeness of material supplied by the client or their agent.*

*Other than any liability on RWE Renewables UK Dogger Bank South (West) Limited and RWE Renewables UK Dogger Bank South (East) Limited detailed in the contracts between the parties for this work RWE Renewables UK Dogger Bank South (West) Limited and RWE Renewables UK Dogger Bank South (East) Limited shall have no liability for any loss, damage, injury, claim, expense, cost or other consequence arising as a result of use or reliance upon any information contained in or omitted from this document.*

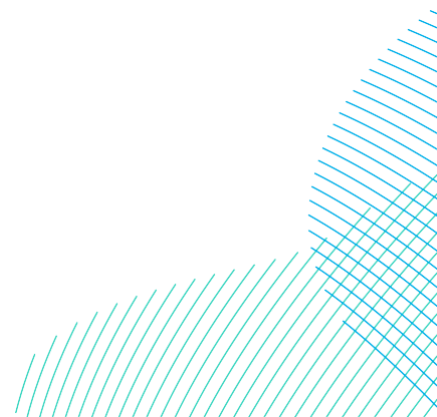
*Any persons intending to use this document should satisfy themselves as to its applicability for their intended purpose.*

*The user of this document has the obligation to employ safe working practices for any activities referred to and to adopt specific practices appropriate to local conditions.*

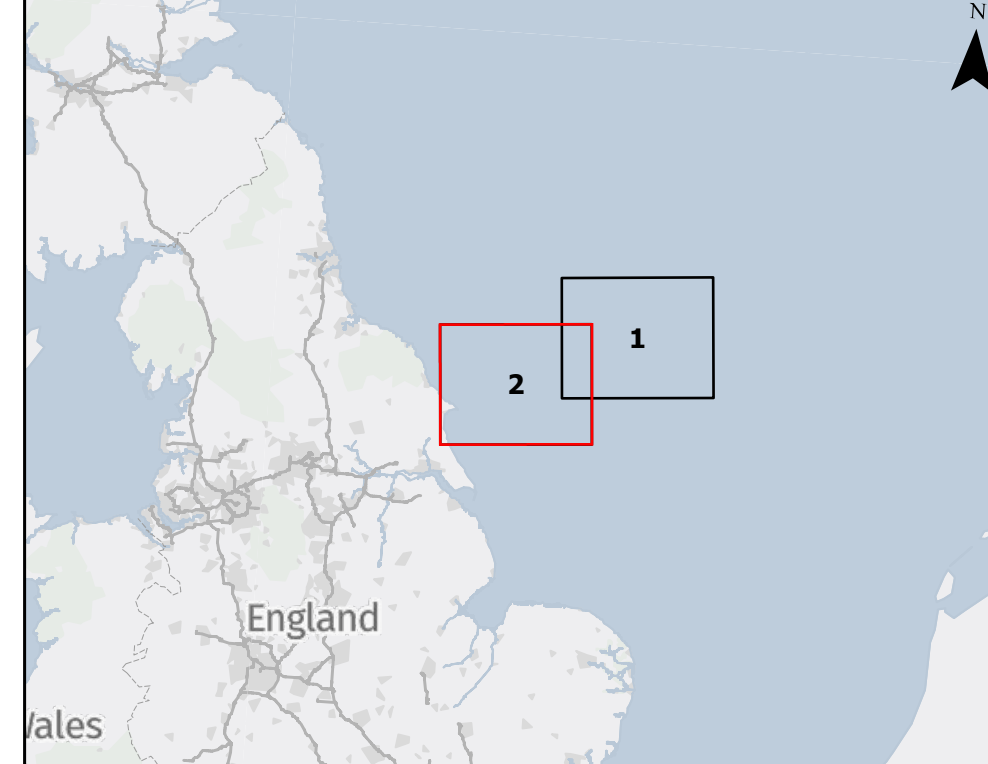
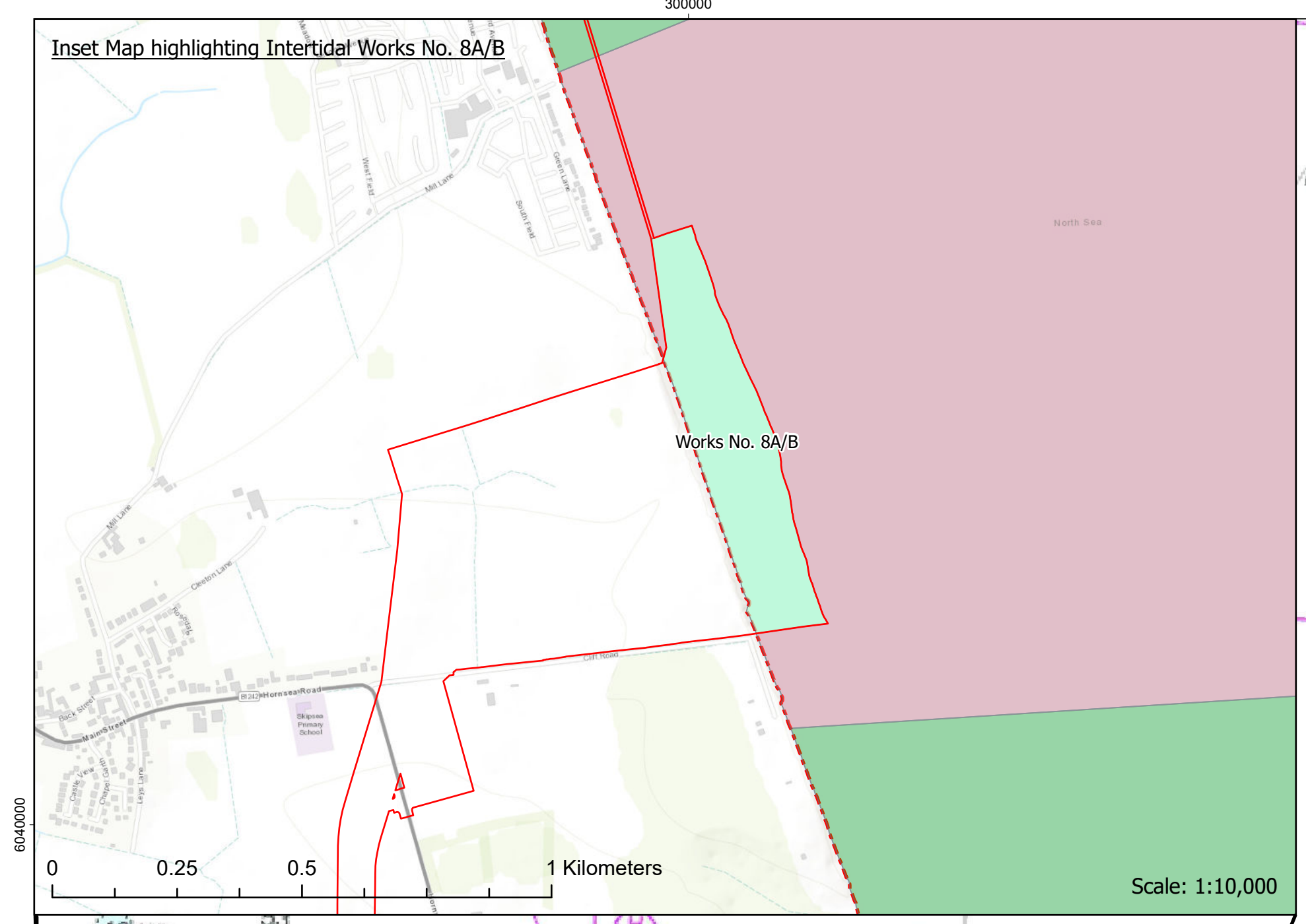
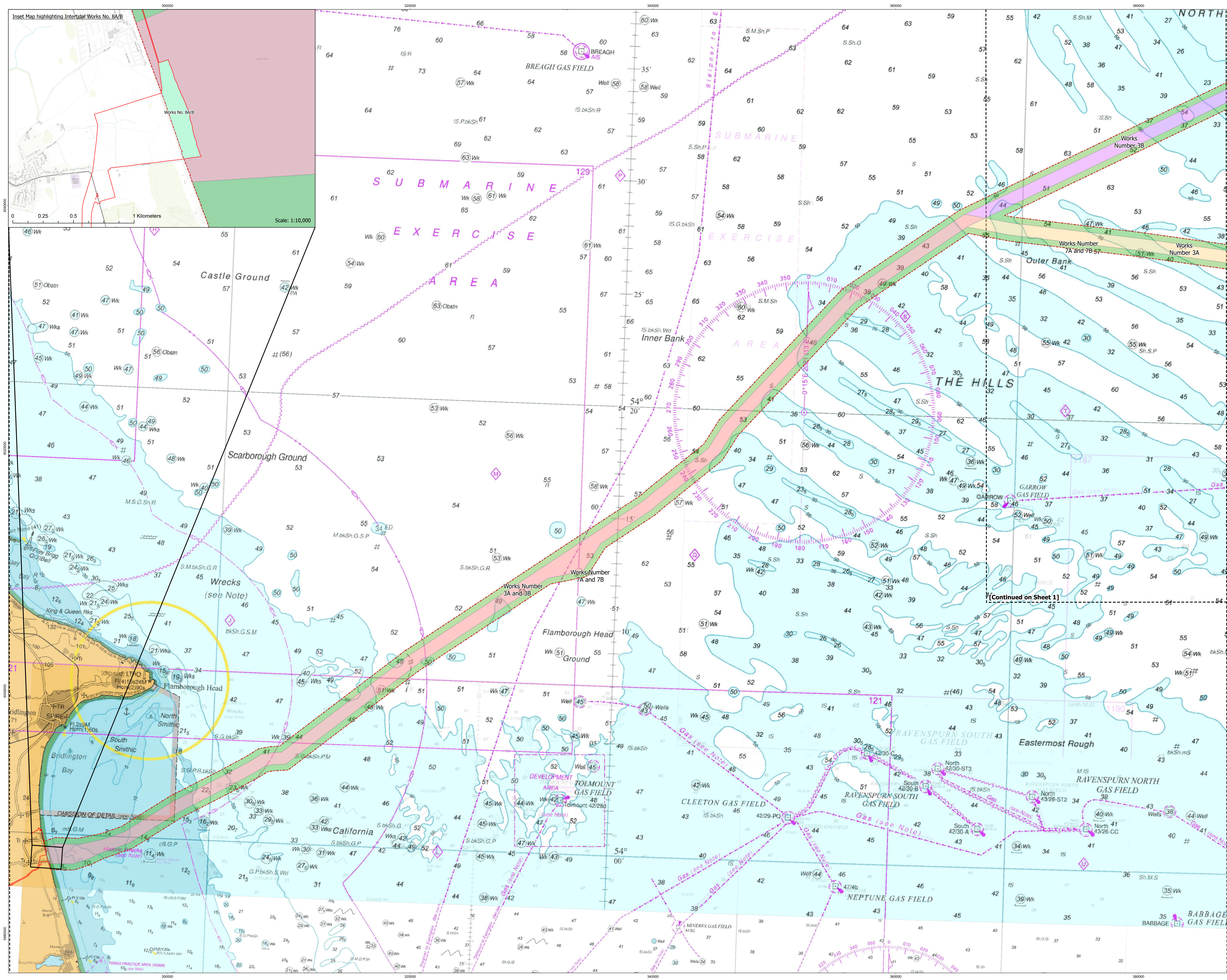
<b>Rev No.</b>	<b>Date</b>	<b>Status/Reason for Issue</b>	<b>Author</b>	<b>Checked by</b>	<b>Approved by</b>
01	February 2025	Draft for PINS / TCE Submission	Wardell Armstrong	RWE	RWE
02	June 2024	Final for DCO Submission	Wardell Armstrong	RWE	RWE
03	October 2024	Submission at Pre-Examination Procedural Deadline	Wardell Armstrong	RWE	RWE
04	February 2025	Submission for Deadline 2	Wardell Armstrong	RWE	RWE

**Revision Change Log**

<b>Rev No.</b>	<b>Page</b>	<b>Section</b>	<b>Description</b>
01	N/A	N/A	Draft for PINS / TCE Submission
02	N/A	N/A	Submission for DCO Application
03	4 to 5	N/A	The Works Plan (Offshore) has been updated to address inconsistencies and apparent omissions which were noted in the Section 55 Checklist provided by the Planning Inspectorate
04	N/A	N/A	Updates have been made to reflect the changes presented in Project Change Request 1 [AS-141]







**KEY:**

- Offshore Order Limits
- Onshore Order Limits
- Works Plan Sheet
- Works Number 3A
- Works Number 3A and 3B
- Works Number 3B
- Works Number 7A and 7B
- Works Number 8A and 8B

Works Number	Works Name
1A	Works No. 1A, DBS East Wind Turbine Array Area
1B	Works No. 1A, DBS West Wind Turbine Array Area
2A	Works No. 2A, DBS East Offshore Converter Platform
2B	Works No. 2B, DBS West Offshore Converter Platform
3A	Works No. 3A, DBS East Export Cable Corridor
3B	Works No. 3A, DBS West Export Cable Corridor
4A/B	Works No. 4A/B, Accommodation Platform
5A/B	Works No. 5A/B, Project Inter-Link Cabling
6A/B	Not Used
7A/B	Works No. 7A/B, Temporary Construction Works
8A/B	Landfall Works Between MLWS and MRWS

**MAP NOTES / DATA SOURCES:**

Contains OS data © Crown Copyright and database right 2025  
 Contains data from OS, Ordnance Survey, Ordnance Survey, INDEPENDENT IP, Inmap, URS, METANSA  
 © British Crown and Oceanfront, 2022. All rights reserved. License No. EMS-EX01-762176  
 Not to be used for navigation. Users should refer to British National Grid Projection  
 Background Mapping is the Marine Chart Map derived from data obtained from the UK Hydrographic Office. All features and lines in key areas are features of the background mapping, please refer to key for charts Flamborough Head to Blakeney Point & River Tyne to Flamborough Head, England - East Coast Map Series and North Sea Offshore Charts - Sheet 11 for full details.

**PROJECT TITLE**  
**Dogger Bank South**

**DRAWING TITLE**  
**Offshore Works Plans**

DATE	REMARKS	DRAWN	CHECKED	APPROVED
15/05/2024	Final for DCO Application	BL	PM	AH
04/10/2024	Update based on PINS comments	BL	PM	AH
07/02/2025	Updated to remove Works 8A/B	BL	PM	AH

